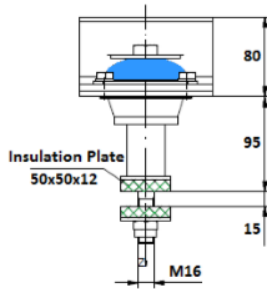
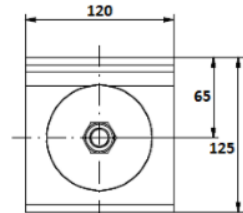
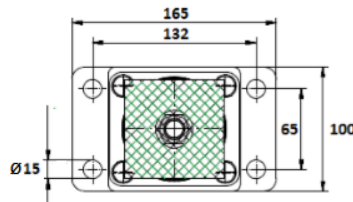
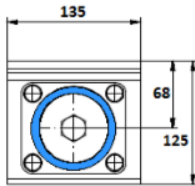
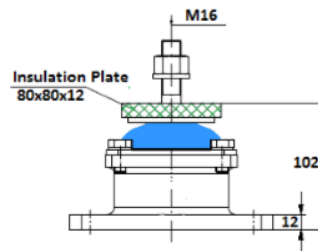


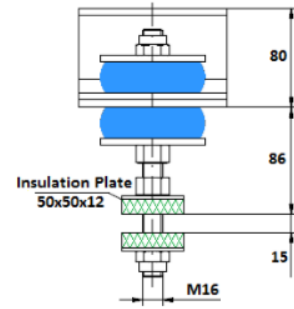
## EXHAUST SUPPORTS UP TO 500 BORE



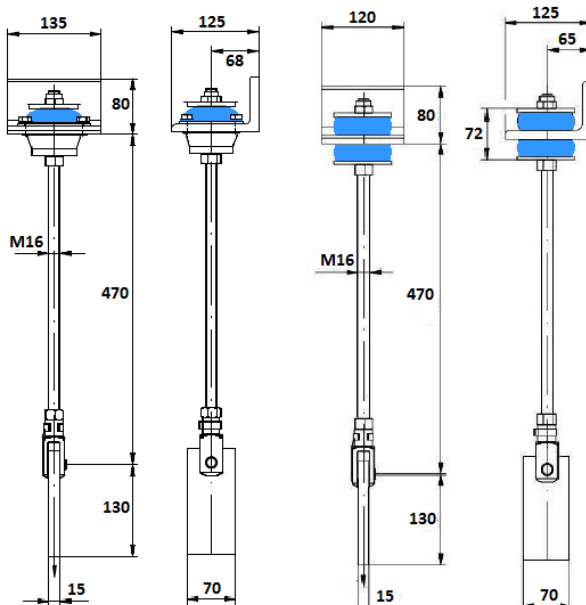
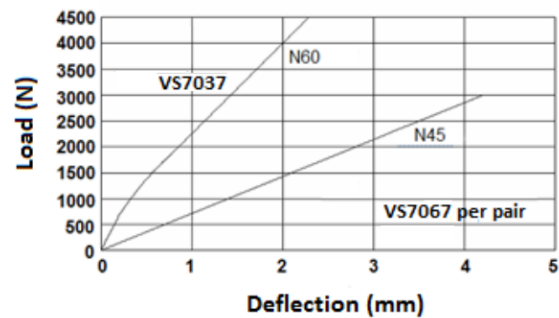
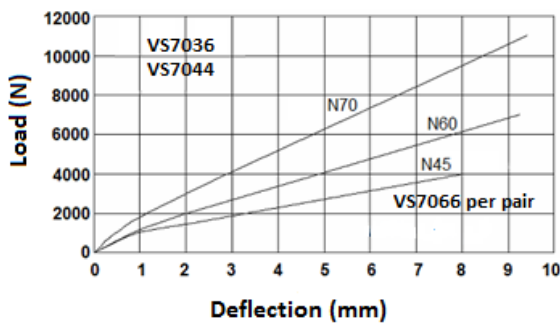
VS7036  
Fixed Point - Conical Mount Type



VS7044  
Fixed Point - Pedestal Type



VS7037  
Fixed Point - Disc Type



VS7066  
Stabiliser - Vi-Cone  
Mount Type

VS7067  
Stabiliser - Disc  
Mount Type

VS7068 as VS7067 but with double height rubber elements and half the unit stiffness.

Stabiliser loads are shown for pairs installed at 90 degrees.

Stabiliser with stainless steel end plates are available for stainless steel pipe work systems.

To order any support, the part number is obtained by using the VS number and the last three characters from the relevant load deflection chart.

E.g. For VS7067 in N60, the part number is VS7067 N60, or with stainless steel end plate VS7067 N60 SS.

